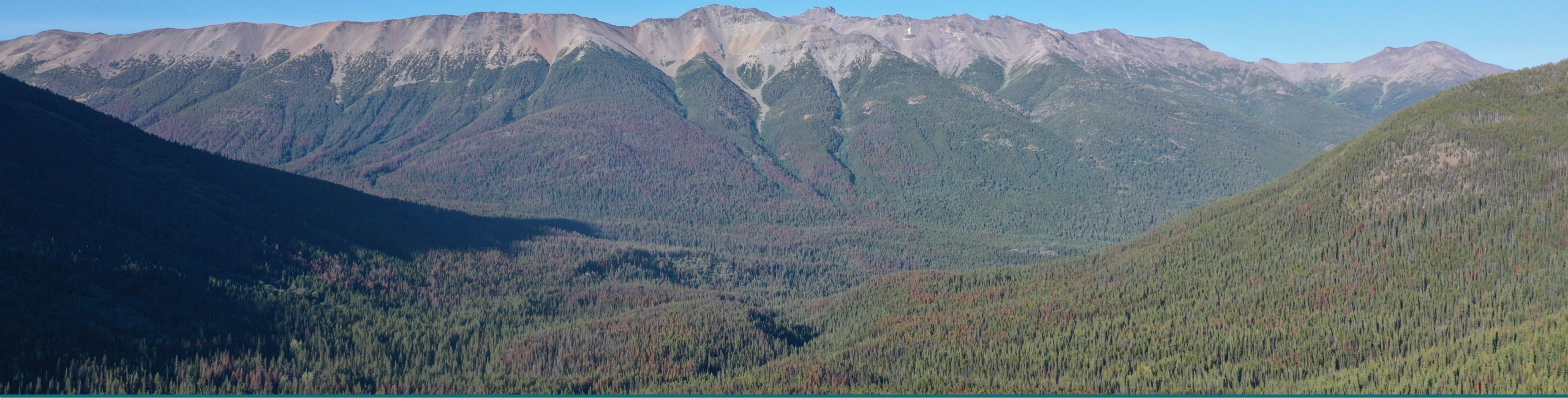


Exploring British Columbia for High-Grade Gold and Copper

NR: July 7th, 2021
Goldrange: 2021 Diamond Drill Program



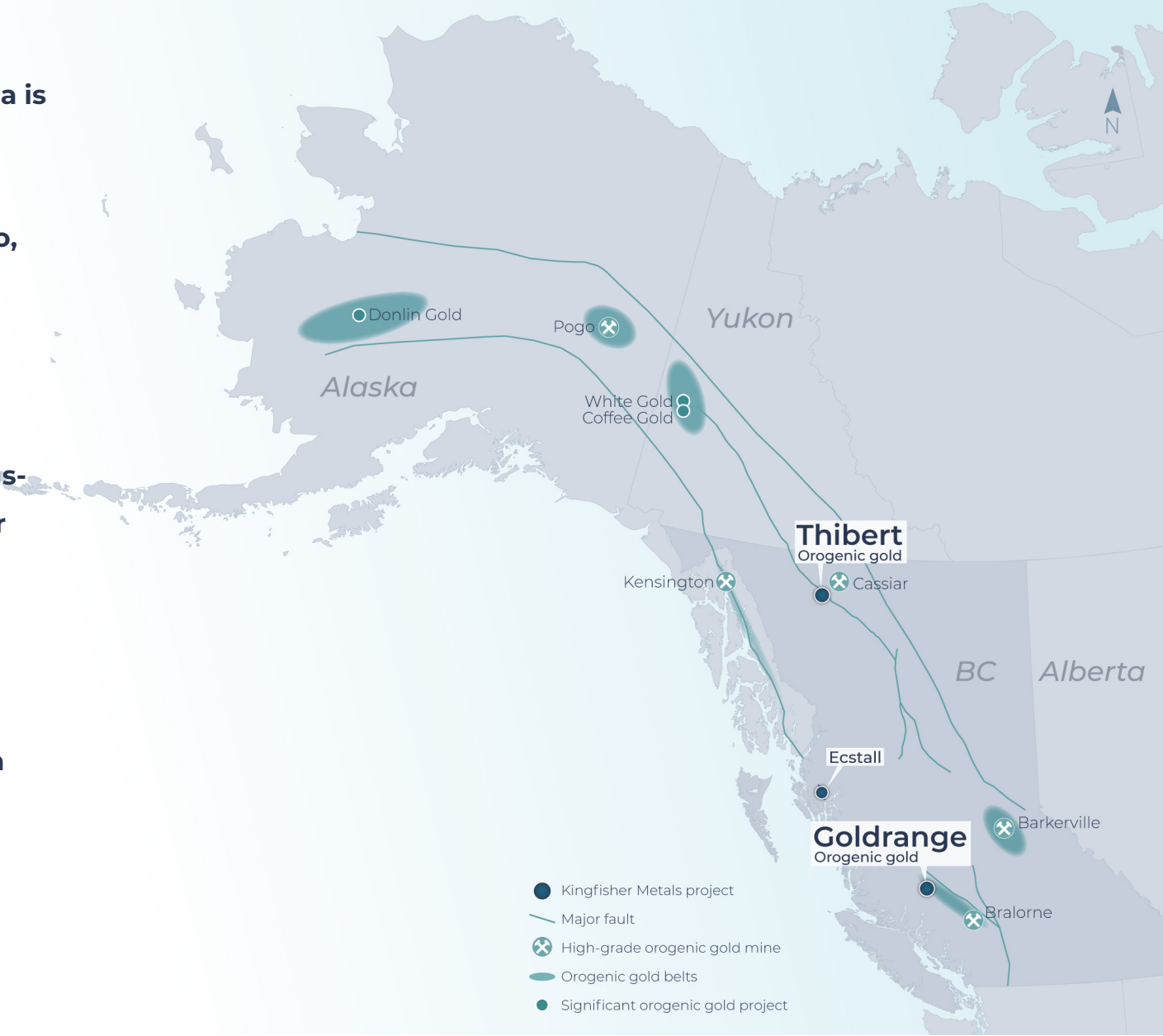
This presentation contains “forward-looking information” concerning the future financial or operating performance of Kingfisher Metals Corp. (“Kingfisher” or the “Company”) and other statements that express management's expectations or estimates of future developments, circumstances or results. Generally, forward-looking information can be identified by the use of forward-looking terminology such as “seeks”, “believes”, “anticipates”, “plans”, “continues”, “budget”, “scheduled”, “estimates”, “expects”, “forecasts”, “intends”, “projects”, “predicts”, “proposes”, “potential”, “targets” and variations of such words and phrases, or by statements that certain actions, events or results “may”, “will”, “could”, “would”, “should” or “might” “be taken”, “occur” or “be achieved”. Forward-looking statements included in this presentation include statements regarding potential mineralization and mineral resources, near-term catalysts, and future plans, strategies and objectives of Kingfisher. While all forward-looking statements involve various risks and uncertainties, these statements are based on certain assumptions that management of Kingfisher believes are reasonable, including that it will be able to obtain financing and on reasonable terms, that its current exploration and other objectives can be achieved, that its exploration and other activities will proceed as expected, that widespread epidemics or pandemic outbreak including the COVID-19 pandemic will have no or minimal impact to Kingfisher's business, that its community and environmental impact procedures will work as anticipated, that general business and economic conditions will not change in a material adverse manner, that Kingfisher will not experience any material accident, labour dispute or failure or shortage of equipment, and that all necessary government approvals for its planned exploration and potential development activities will be obtained in a timely manner and on acceptable terms. There can be no assurance that the forward-looking statements will prove to be accurate and actual results and future events could differ materially from those anticipated in such statements. Important factors that could cause actual results to differ materially from Kingfisher's expectations include, among others, the actual results of current exploration activities being different than those anticipated by Kingfisher, changes in project parameters as plans continue to be refined, changes in estimated mineral resources, future prices of metals, increased costs of labor, equipment or materials, availability of equipment, failure of equipment to operate as anticipated, accidents, effects of weather and other natural phenomena, risks related to community relations and activities of stakeholders, and delays in obtaining governmental approvals or financing. Although Kingfisher has attempted to identify important factors that could cause actual results to differ materially, there may be other factors that cause results not to be as anticipated, estimated or intended. There can be no assurance that such statements will prove to be accurate as actual results and future events could differ materially from those anticipated in such statements. Accordingly, readers should not place undue reliance on forward-looking statements. Kingfisher does not intend, and expressly disclaims any intention or obligation to, update or revise any forward-looking information or statements whether as a result of new information, future events or otherwise, except as required by law.

No stock exchange, securities commission or other regulatory authority has approved or disapproved the information contained on this presentation. This presentation is not an offer to purchase securities and does not constitute an offering document under Securities legislation. All information is presented in Canadian dollars unless otherwise stated; as of the date indicated on the front of this presentation. This presentation contains information obtained by the Company from third parties. The Company believes such information to be accurate but has not independently verified such information.

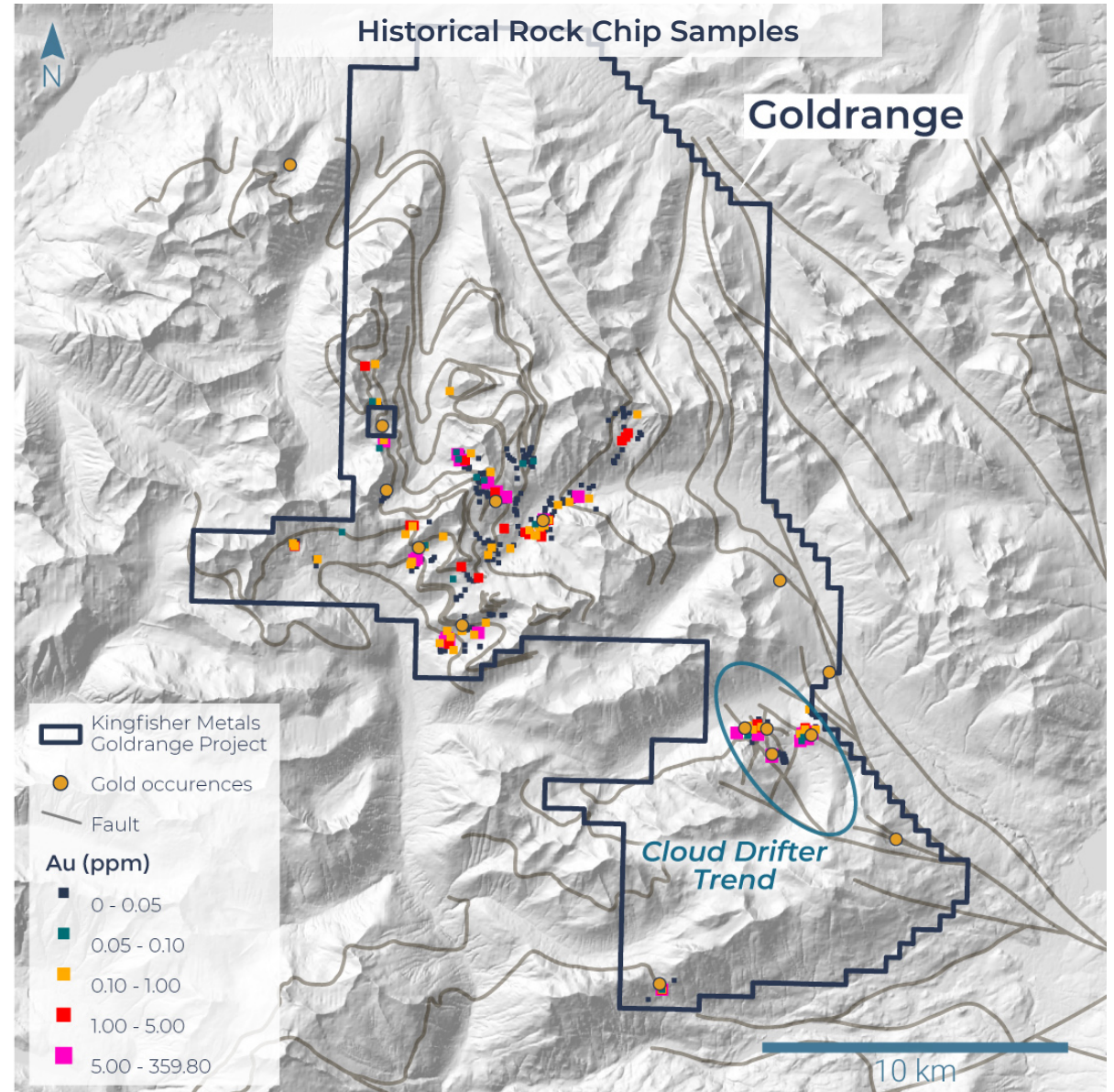
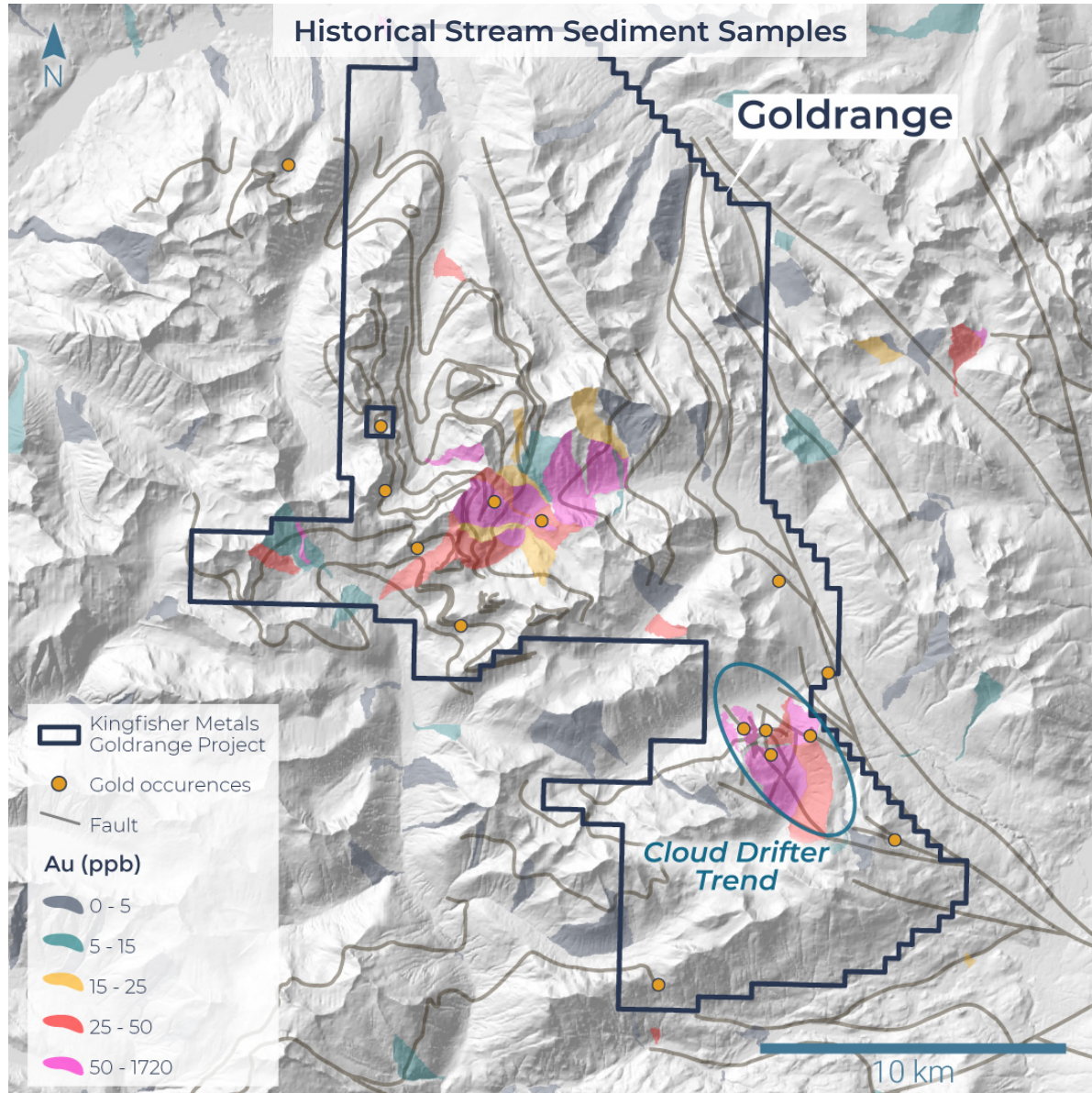
The data disclosed in this presentation relating to compiled drilling and sampling results is historical in nature. Neither the Company nor a qualified person has yet verified this data and therefore investors should not place undue reliance on such data. The Company's future work will include verification of the data.

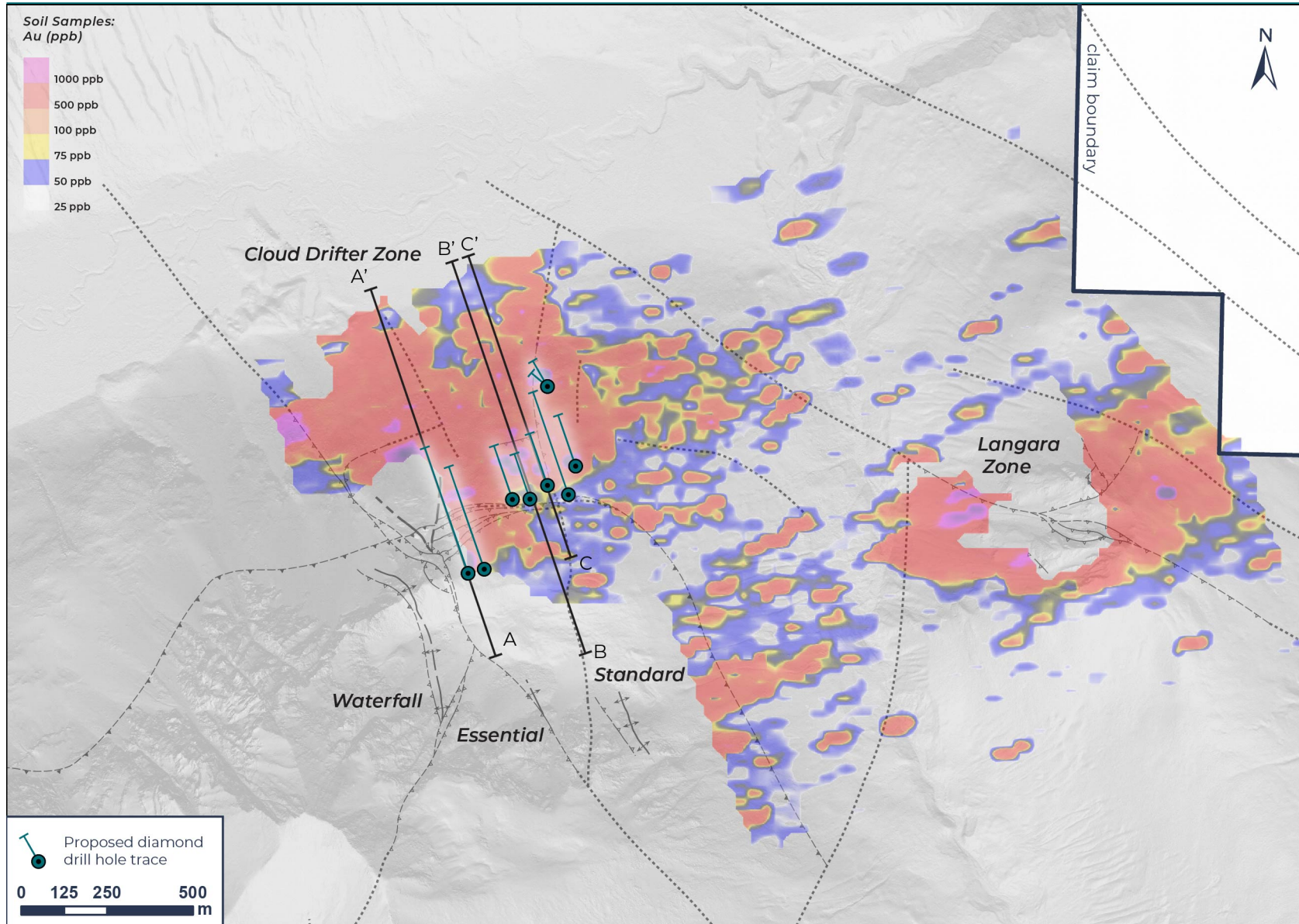
Dustin Perry, P. Geo., the Chief Executive Officer of the Company, is the Qualified Person as defined by NI 43-101, and has prepared and approved the technical data and information in this presentation.

- Cretaceous-aged orogenic gold in Western North America is associated with crustal-scale deformation zones.
- Well-established gold belts include the Goodpaster (Pogo, ~10 M oz), Dawson (Coffee, 4.9 M oz), Kuskokwim (Donlin Gold, 33.8 M oz), Barkerville (Cariboo, 5.9 M oz), and the Yalakom Gold Belt (Bralorne, 4.2 M oz).
- The largest known epizonal gold system is the Cretaceous-aged Donlin Gold, which is analogous to the Cloud Drifter Trend within the Goldrange Project.
- The Goldrange and Thibert Projects are located along significant deformation zones and were acquired due to their high prospectivity for discovery and low exploration maturity.

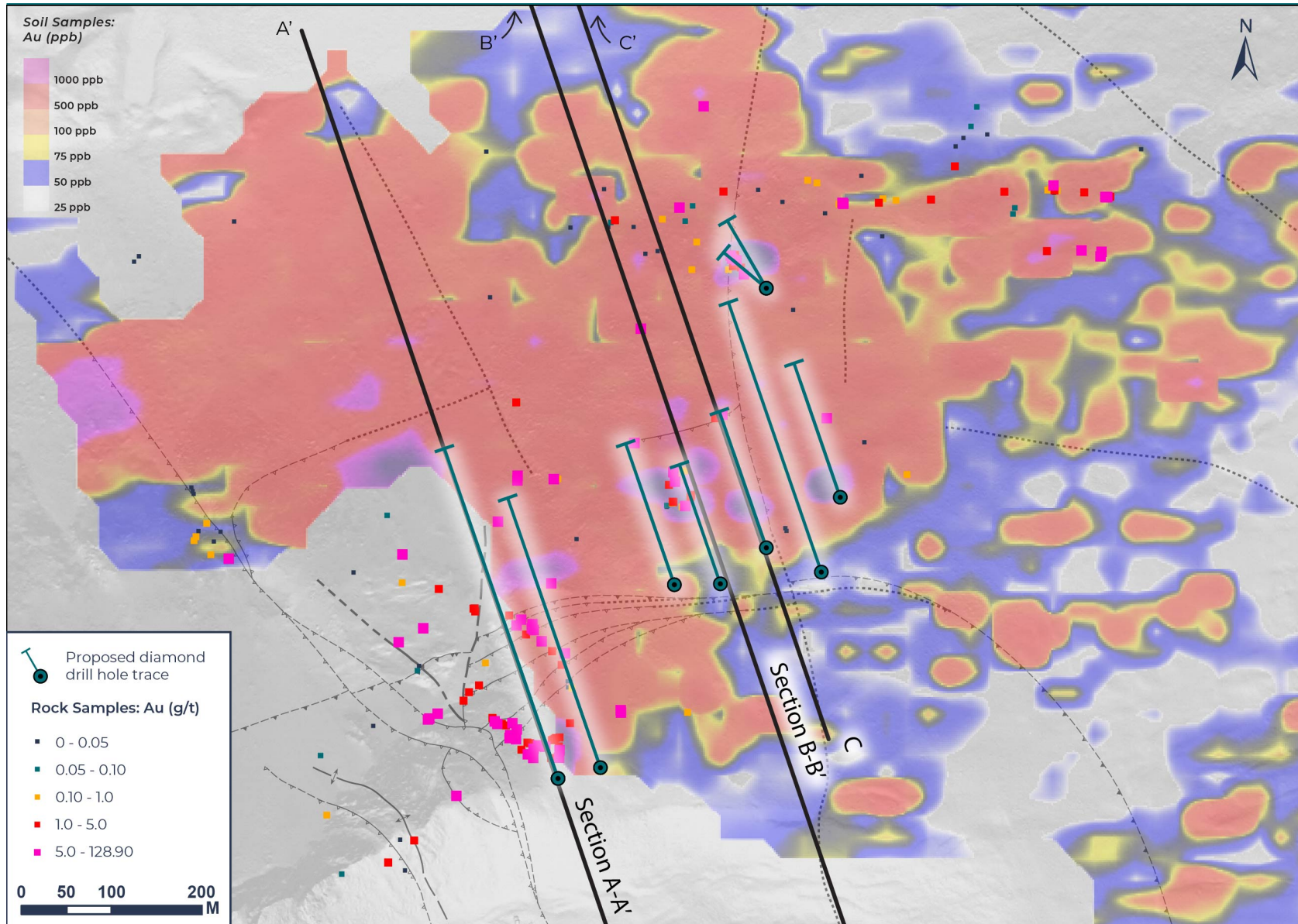


- Kingfisher Metals project
- Major fault
- ⊗ High-grade orogenic gold mine
- Orogenic gold belts
- Significant orogenic gold project

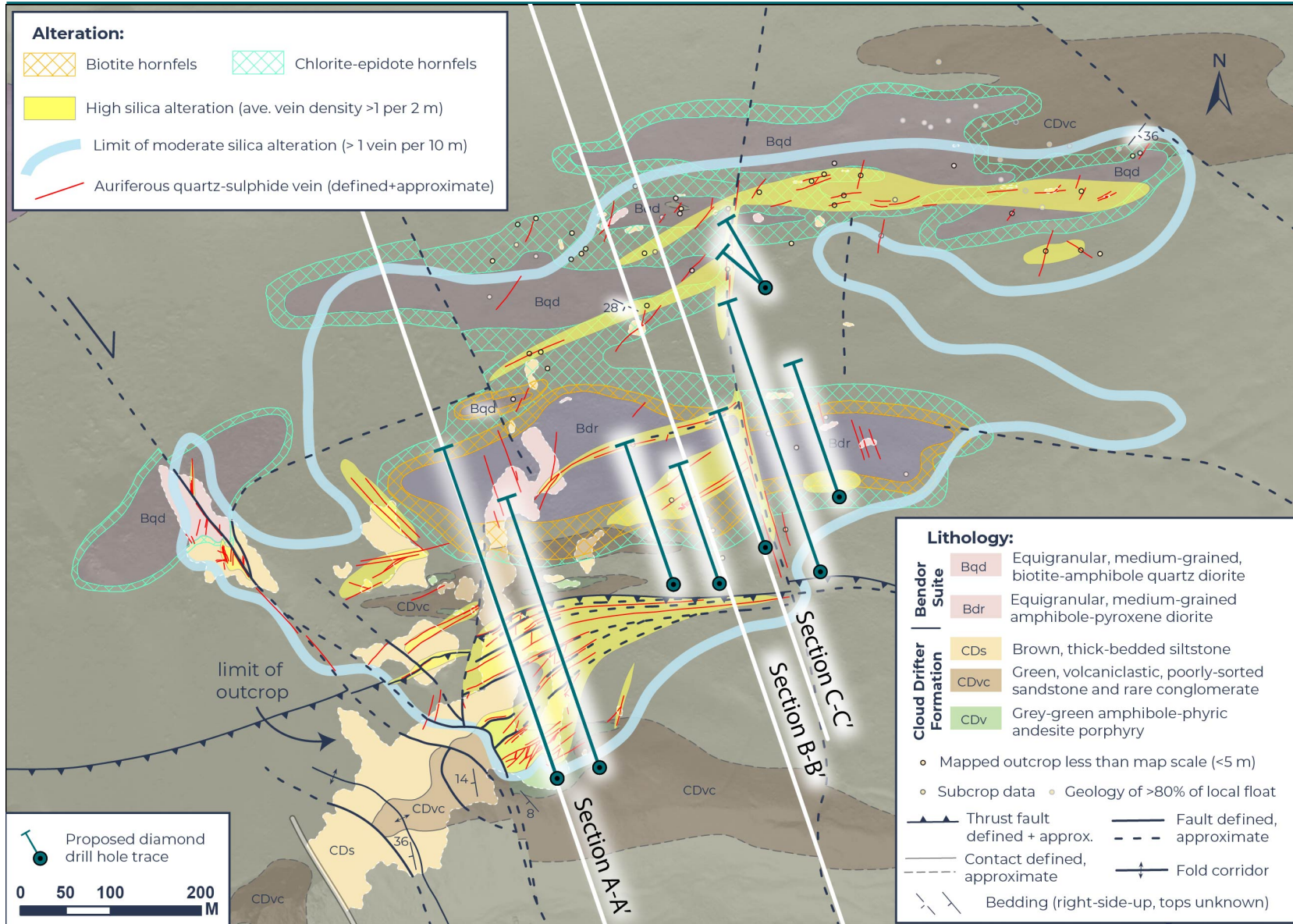




- The initial planned diamond drill holes at the Cloud Drifter Trend are located within the Cloud Drifter Zone.
- Initial drill collar locations selected to drill test the highest confidence targets based on surficial geochemical data and geological mapping by Kingfisher Metals in 2020.
- The Cloud Drifter Trend is the most advanced target within the Goldrange Project.

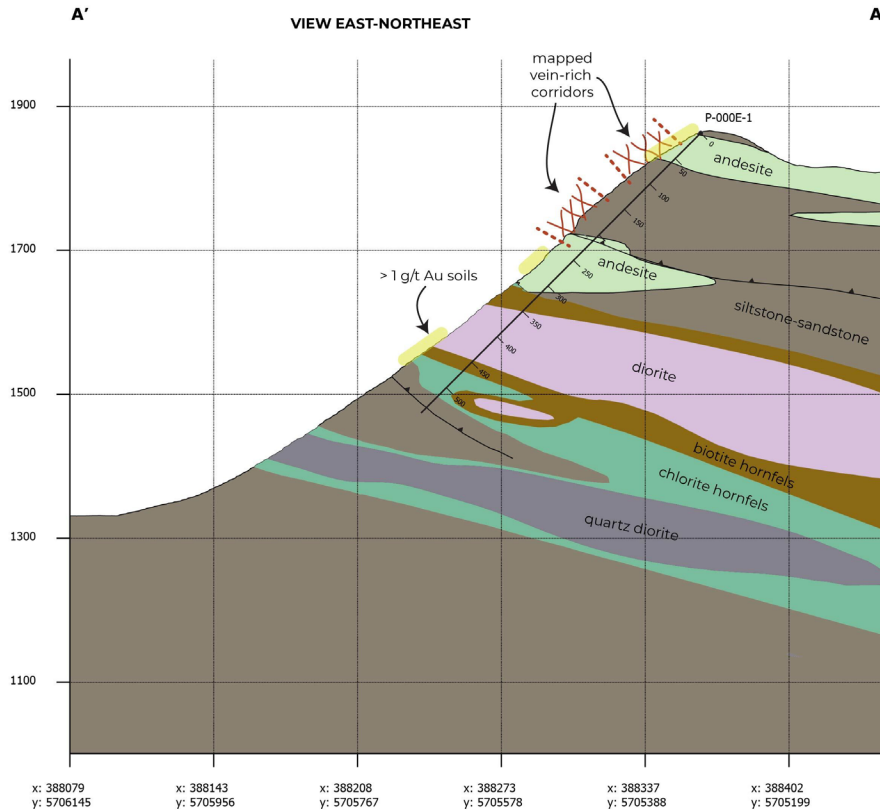


- High-grade soil anomalies (> 0.5 g/t Au) will be tested in the 2021 drill campaign.
- Drill targets were selected from regions with the highest geological confidence that have been de-risked by rock and soil sampling, backpack drilling, and surface mapping.
- The scale of the high-grade soil anomaly and the presence of highly anomalous gold in rock sampling and backpack drilling indicates potential for both high-grade Au and high relative tonnage.
- Preliminary IP geophysical results confirm areas of high chargeability that correlate with high-grade gold-in-soil anomalies and mapped quartz-sulphide mineralization.

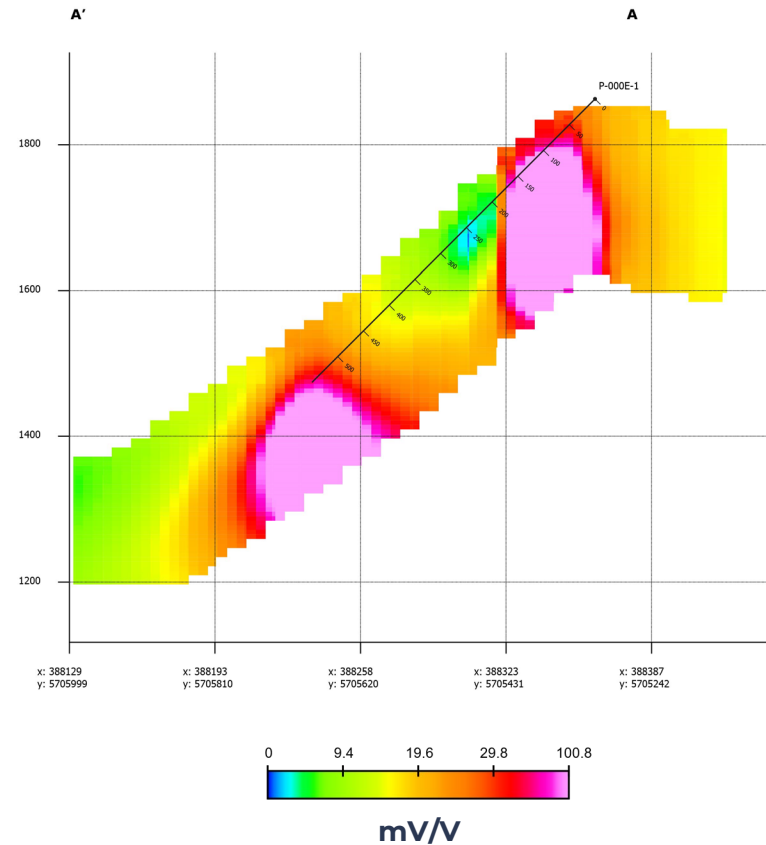


- Drilling is focused within the Cloud Drifter Zone, the most de-risked region of the Cloud Drifter Trend.
- Three prospective features will be targeted by the drill program:
 1. Sheeted vein swarm discoveries in outcrop outlined by geological mapping and rock sampling.
 2. Sizeable high-grade gold-in-soil anomalies below tree line and coincident IP chargeability anomalies.
 3. Fault-focused, higher-grade corridors similar to the Standard showing, which returned 6.9 m of 10.84 g/t Au in backpack drilling (BP-ST-20-01).

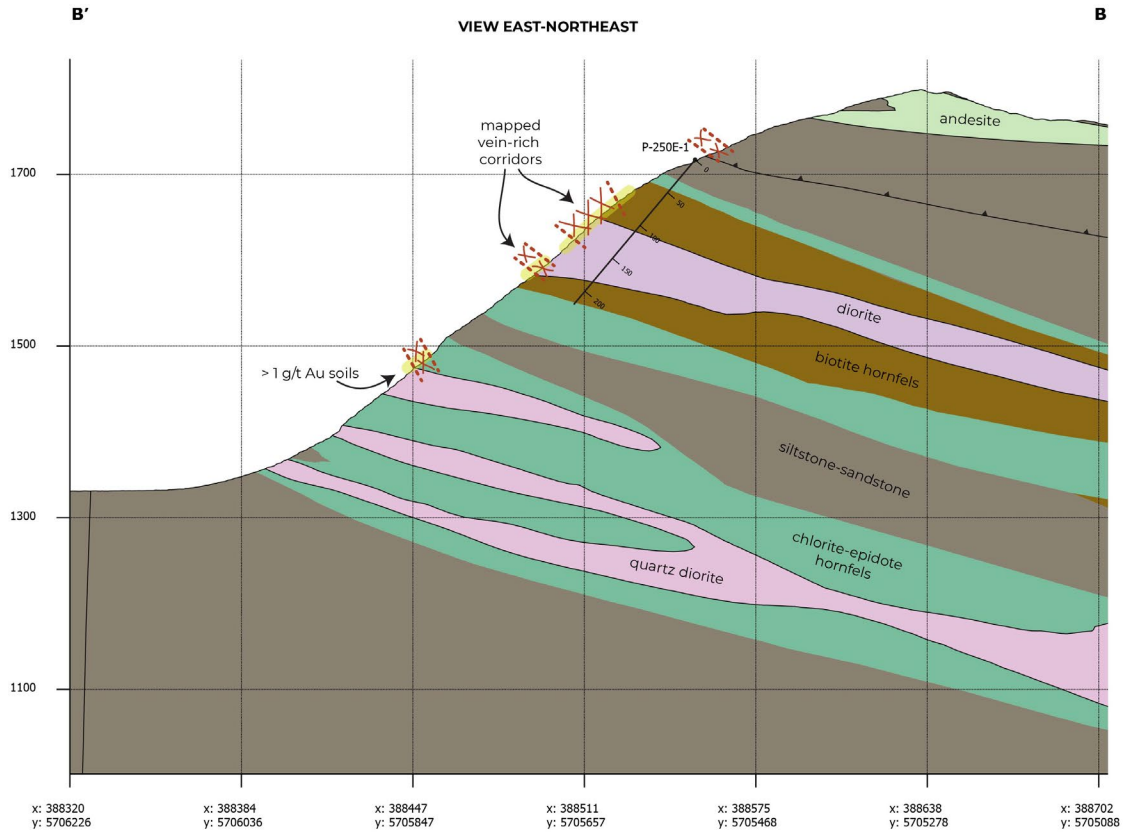
Geology



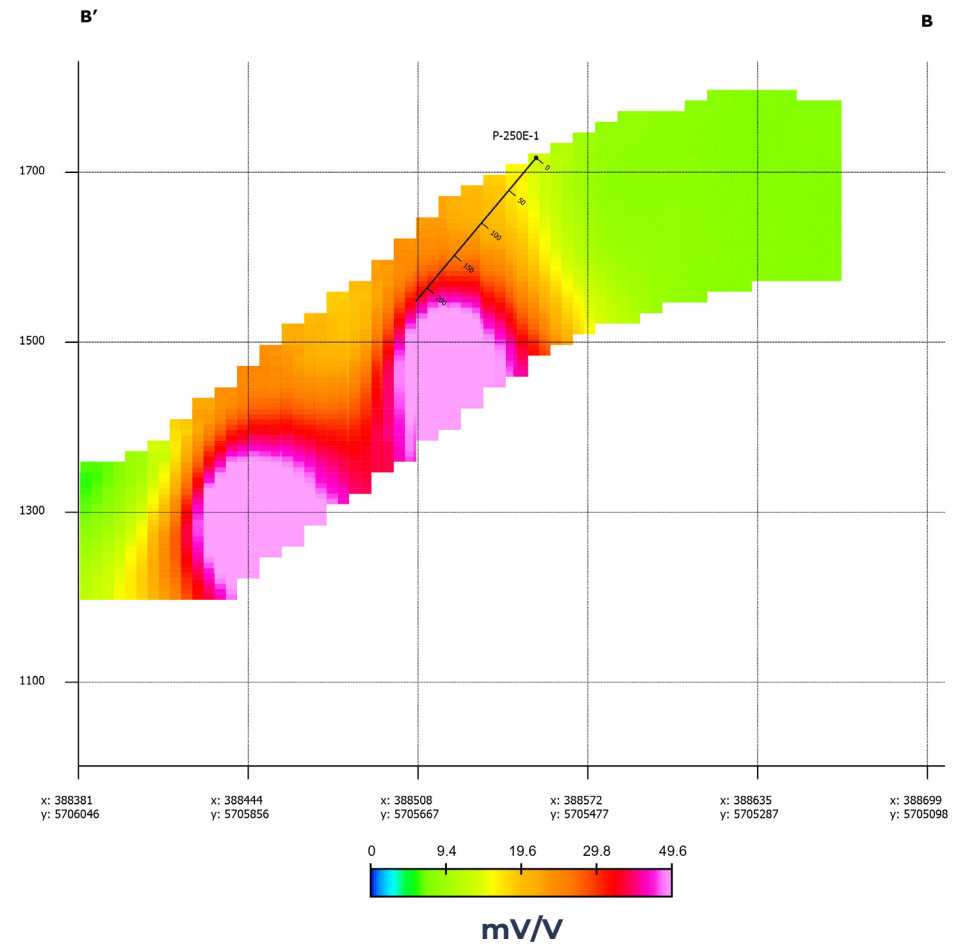
IP Geophysics: Chargeability



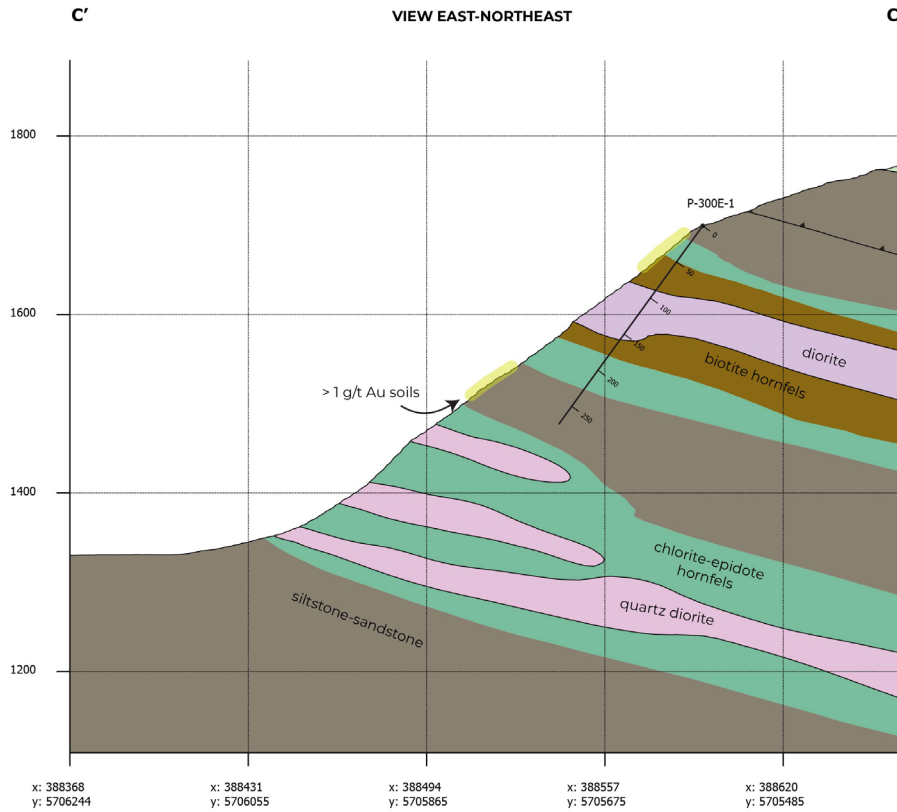
Geology



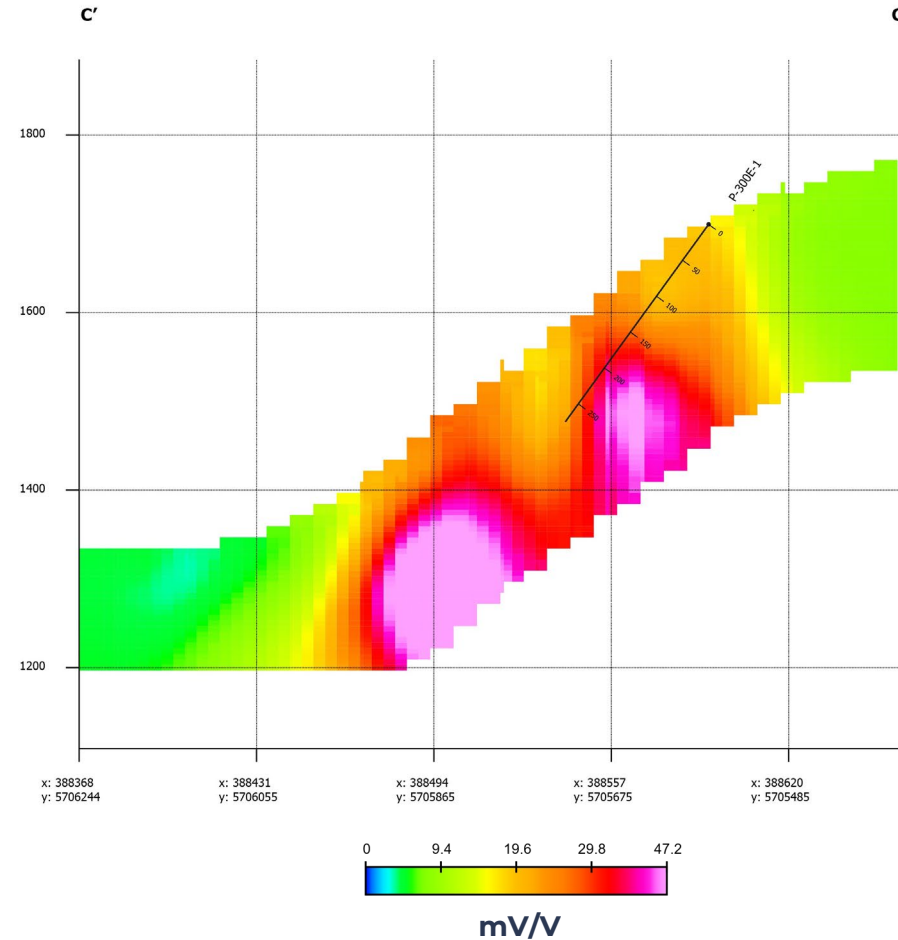
IP Geophysics: Chargeability



Geology



IP Geophysics: Chargeability

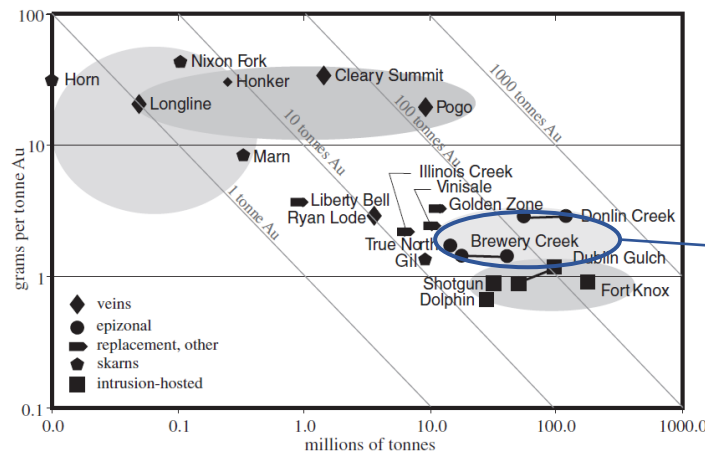


Property	Contained Au	Grade (g/t)	Deposit Type
Pebble	70,741,548	0.34	Porphyry Cu-Au
KSM	47,233,584	0.49	Porphyry Cu-Au
Norte Abierto	45,184,603	0.55	Porphyry Cu-Au
Sukhoi Log	45,101,067	2.1	Sediment Hosted Gold
Donlin Gold	39,055,486	2.24	Epizonal Gold
Siembra Minera	26,749,394	0.7	Porphyry Cu-Au
Reko Diq	25,327,087	0.26	Porphyry Cu-Au
La Colosa	23,313,673	0.87	Porphyry Cu-Au
Cascabel	21,562,785	0.25	Porphyry Cu-Au
Wafi-Golpu	21,479,913	0.84	Porphyry-Epithermal

Source: Mining Intelligence data 2021

- Donlin Gold is an example of an epizonal gold system that is the same age and style as Cloud Drifter.
- Of the top 10 global gold resources, it is the epizonal gold that is the highest average gold grade.
- Compared to other deposit types in the Tintina Gold Belt, epizonal gold systems can have comparable sizes (tonnage) as intrusion-related systems but have significantly higher grades.

Gold and tonnage plot for the Tintina Gold Belt



Epizonal gold – high tonnage and grade

Mineralization hosted on adjacent and/or nearby properties is not necessarily indicative of mineralization hosted on the Goldrange Project.

FEATURE	DONLIN GOLD	CLOUD DRIFTER
Age	~ 70 Ma	Post-68 Ma
Vein mineralogy	quartz-arsenopyrite-pyrite+/-chalcopyrite	quartz-arsenopyrite-pyrite-chalcopyrite
Vein styles	Most < 10 cm wide, banded or drusy quartz, 3-5% vein abundance in ore zones	Most 1-10 cm wide, banded and open space textures, 1-5% vein abundance in target areas
Structure	1) Early fold-and-thrust deformation, 2) low angle thrusts parallel beds, 3) high angle faults post-date deformation	1) Early fold-and-thrust deformation, 2) low angle thrusts parallel beds, 3) high angle faults post-date deformation
Paragenesis	Early intrusion-related stockwork in hornfels/biotite hornfels alteration; late auriferous quartz veins	Early intrusion-related stockwork in hornfels/biotite hornfels alteration; late auriferous quartz veins
Signature	Au-As-Ag-Sb-Hg-Mo-W+/-Cu	Au-As-Ag-Sb-Cu-Bi-Te-Mo-W
Metamorphic Grade	lowest grades of regional burial metamorphism (sub-greenschist)	low grade (sub-greenschist metamorphism)
Aspect Ratio of Mineralization	1:1.25 aspect ratio principle resource area	1:2 km principle target (Cloud Drifter Zone)
Intrusions	Magmatism overlaps with deformation; predates auriferous gold vein emplacement	Magmatism overlaps with deformation; predates auriferous gold vein emplacement



Kingfisher METALS

Contact Kingfisher:

885 W. Georgia St, Suite #2040

Vancouver, British Columbia, Canada

www.kingfishermetals.com

Tel: +1-236-358-0054

Dustin Perry, CEO

dustin@kingfishermetals.com

David Loretto, President

david@kingfishermetals.com

Driven by Discovery

TSXV: KFR

FSE: 970

